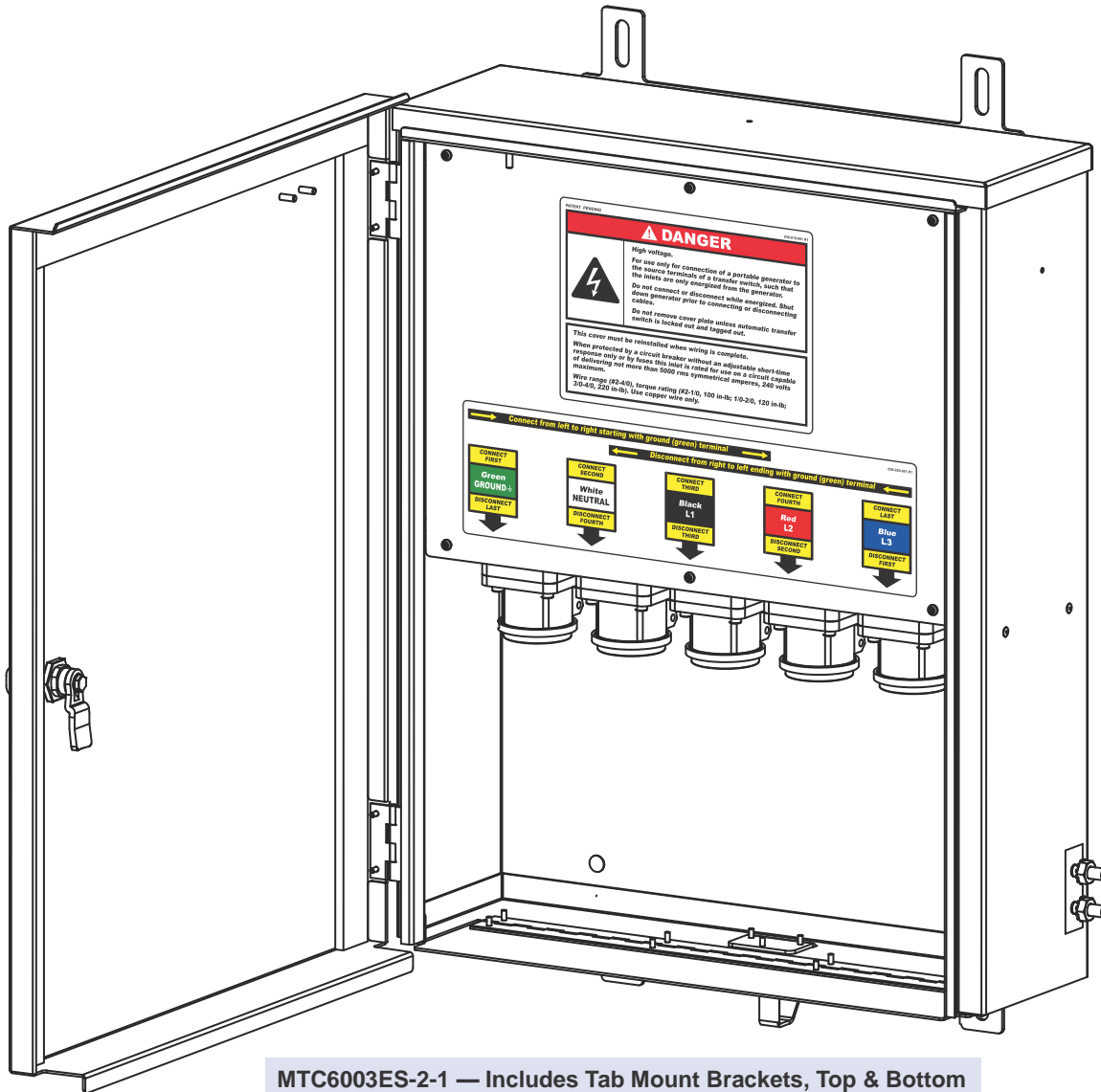


GCB 200/3 Series 200 AMP Generator Interface Three-Phase



MTC6003ES-2-1 — Includes Tab Mount Brackets, Top & Bottom

Specifications

Maximum Operating Voltage	240 VAC Line-to-Line
Nominal Frequency	60 Hertz
Phases/Configuration	Three (L1, L2, L3, Neutral, & Safety Ground)
Input/Output Current Rating	200 Amperes RMS
Input Circuit Breaker Rating	200 Amperes per Pole
Short Circuit Current Rating	5,000 Amperes RMS, Symmetrical, 240 VAC Maximum
Input from Generator Wire Size	1/0 – 4/0
Output to Transfer Switch Wire Size	#2 – 4/0
Output Conduit Trade Size	Up to 3 inch (sides, rear, & top)
Local Safety Ground Connection	Dual 5/16 in. studs
Enclosure Rating	NEMA 3R
Access Restriction	Screwdriver Latch & Padlock Hasp
Dimensions	Body / All
Height	23.462" (59.59 cm) / 26.444" (67.17 cm)
Width	18.140" (46.08 cm) / 19.172" (48.70 cm)
Depth	6.291" (15.98 cm) / 7.671" (19.48 cm)
Weight	~35 lbs. / ~ 15.9 kg
Finish	Gray Powder Coat
Status Jumper Connector (Optional)	MC2076 AT&T Deutsch Jumper Status Connector (with strain relief)
Cable (Optional; Sold Separately)	MC2075 AT&T Deutsch Connector 20' Cable (600V insulation)
Connectors	(5) CLS 16 Series Cam Connectors Male, Double Set Screw Style
UL Listed	Transfer Switch Accessory
	Listed by Underwriters Laboratories, Inc.



PATENT PENDING

MICRIN

Distributed by

J Custom Supply, Inc
10434 Mammoth
Baton Rouge, LA 70814

Toll free:

800-226-5657

website:

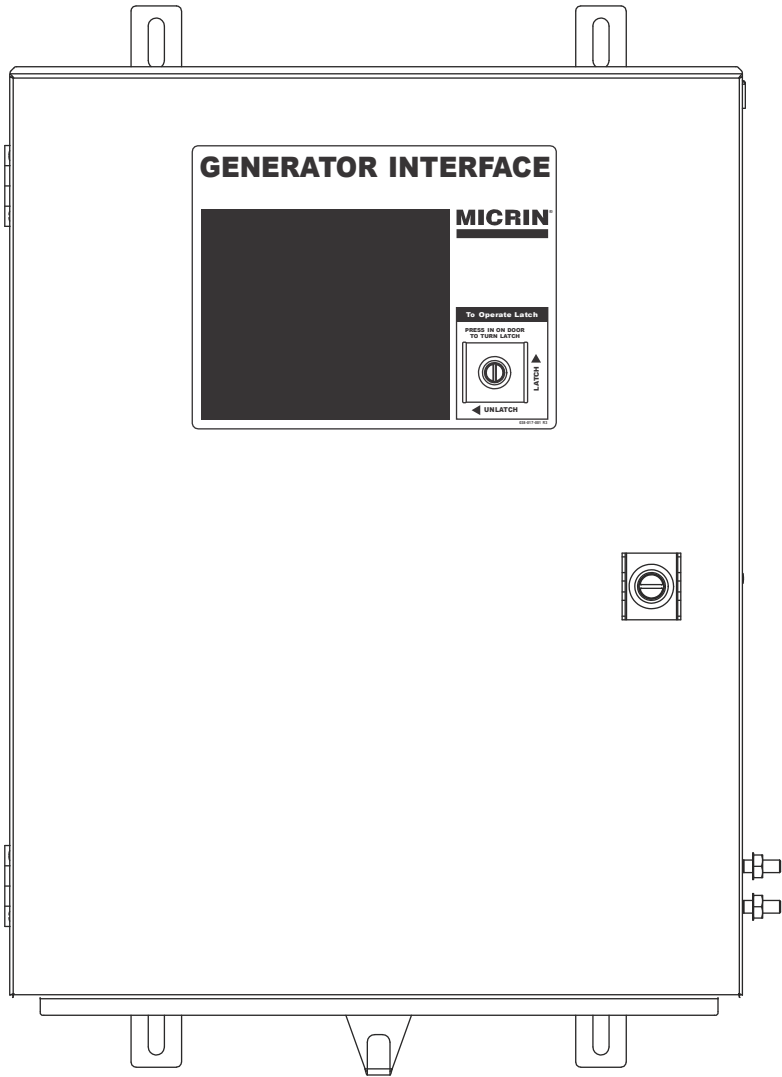
www.jcustom.com

MULTISTREAM
POWER SYSTEMS

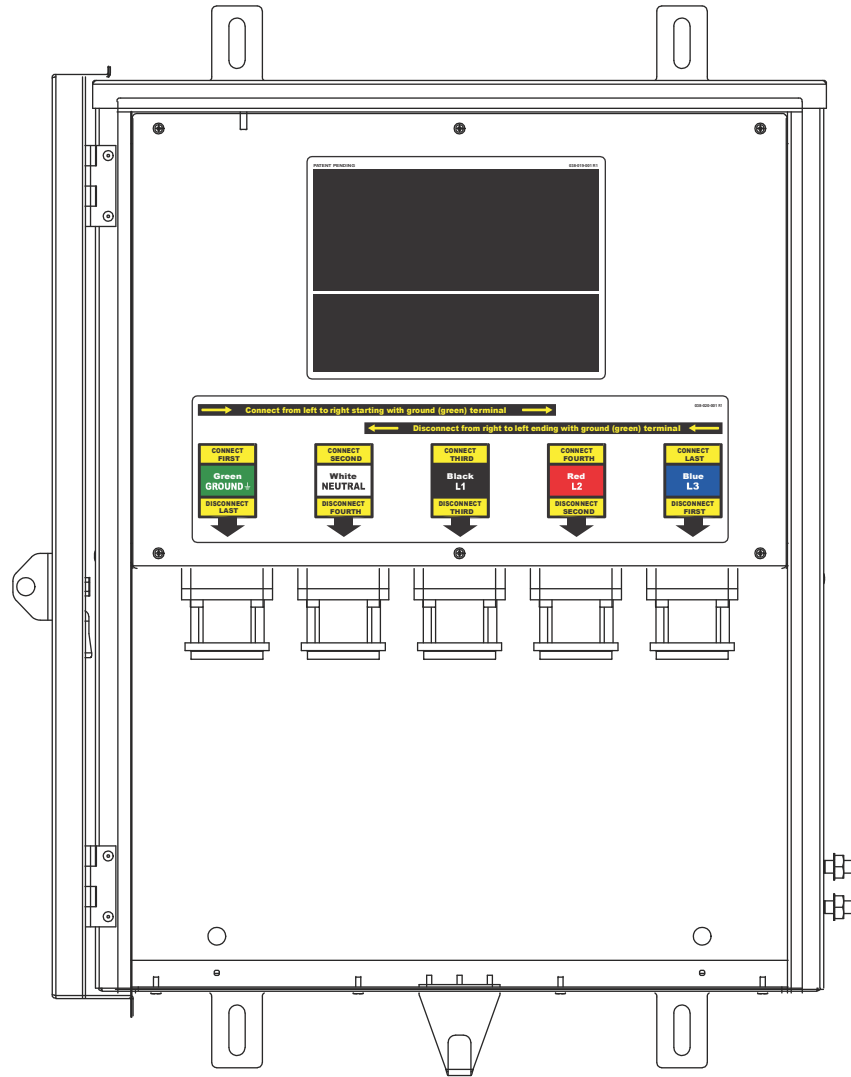
GCB 200/3 Series

200 AMP Generator Interface

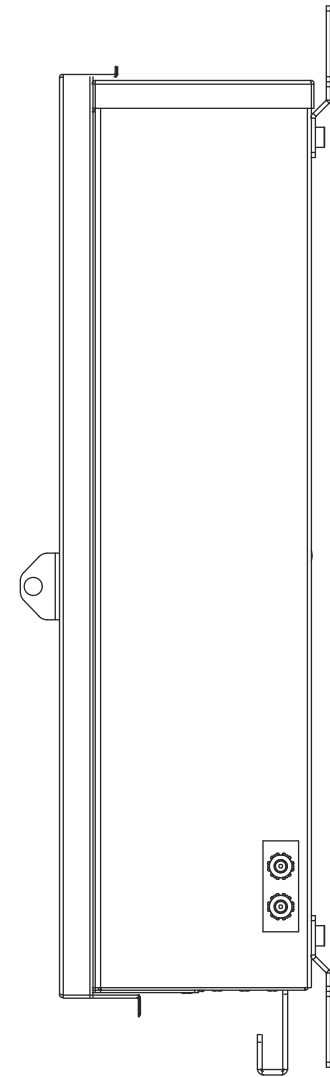
Three-Phase



Front Cover Closed View



Front Cover Open View



Side View Showing Hasp

PATENT PENDING



Distributed by

J Custom Supply, Inc
10434 Mammoth
Baton Rouge, LA 70814

Toll free:

800-226-5657

website:

www.jcustom.com

