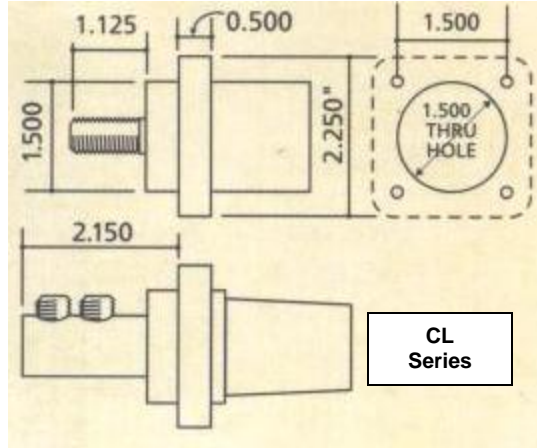


Panel Mounts

advanced devices

CLM "Mini" Series & CL Series



CLM Series – 150A/600V

Threaded Stud

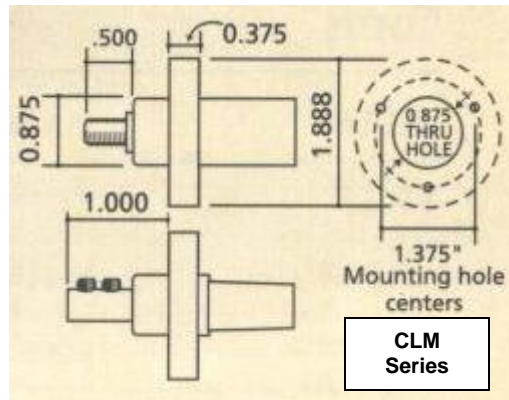
CLMFRS # 8 to # 2 Female

CLMMRS # 8 to # 2 Male

Double Set Screw

CLMFR # 8 to # 2 Female

CLMMR # 8 to # 2 Male



CL Series – 400A/600V

Threaded Stud

CL40FRS Female

CL40MRS Male

Double Set Screw – Copper or Brass

CL40FR 2/0 - 4/0 Female

CL40MR 2/0 - 4/0 Male

CL20FR # 2 to 2/0 Female

CL20MR # 2 to 2/0 Male

To Order Brass, Add "B" To The Product Number



- CL panel mount contacts are machined from 99% hardened copper, yielding 20% more efficiency
- Copper connector is available with double set screw or threaded stud
- Copper contacts exhibit superior corrosion resistance versus brass
- Rigid thermoplastic permits choice of pre-tapped holes or self tapping screws, eliminating the need for nuts
- CLM Mini Cam will accept the No. 2 cable and has the double set screw design with the EZ style insulator. This will provide the full 150 amp rating of the connector

Note: Item numbers in the Advanced Devices Catalogs are reversed for Male and Female in the CLM Series. The item numbers shown here are correct.

www.camlok.com

1-800-CAM-LOKS

(1-800-226-5657)

Phone: (225) 654-0929

Fax: (225) 654-6061

E-mail: jcustomsupply@bellsouth.net

**J Custom
Supply
Inc**

J Custom Supply, Inc.

6142 Hwy 19

P.O. Box 678

Zachary, LA 70791